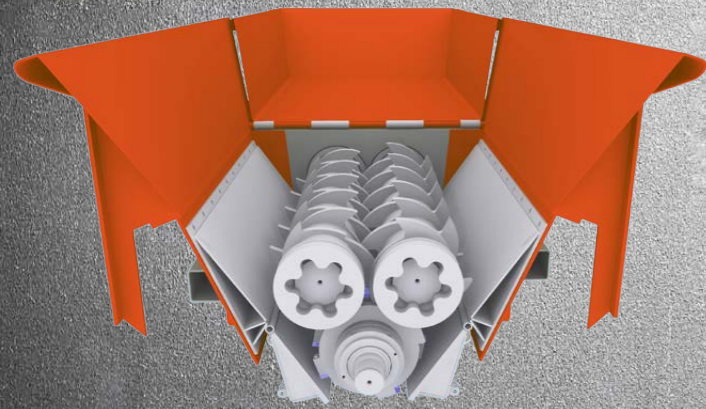


HOTLINE

+49 (0)3695 / 85 855-0

NEW // TRI-SHAFT SYSTEM

For maximum performance and precise final product!

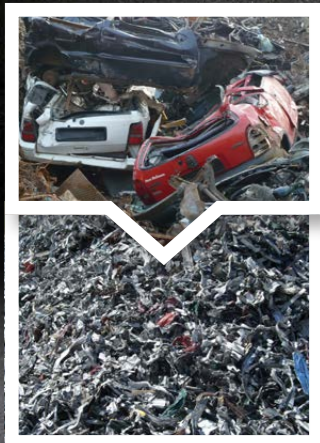


The tri-shaft system is based on a multi-stage cutting process. First the primary shaft breaks the material into coarse chunks. Then the hydraulic bearing secondary shaft cuts the pre-shredded material into a precise final product.

FEATURES AT A GLANCE

- ✔ **Tri-shaft cutting process**
Multiple stages for precise final product
- ✔ **Powerful diesel engine with 768 hp**
Also available with electric drive
- ✔ **Automatic reversing function**
Protects against fracture of the cutting tools
- ✔ **Two tilting hoppers**
Optimal feeding of the material to the tool shafts
- ✔ **Very high throughput**
Depending on material and shaft setup up to 180 t/h
- ✔ **Low wear and maintenance costs**
Maintenance friendly modular design

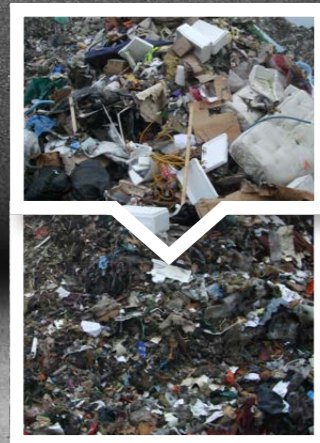
APPLICATIONS WITH HIGH REQUIREMENTS



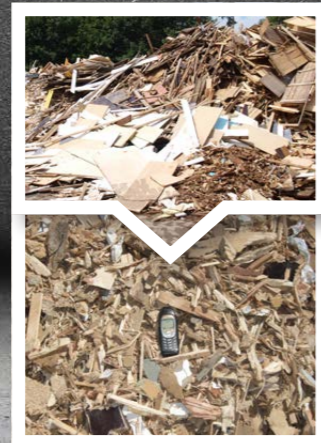
SCRAP METAL/CAR BODIES
Reducing the volume of valuable ferrous and non-ferrous metals.



ROOTS / TREE LOGS
Our aggressive ripper hooks first break the massive material.



WASTE
Self-cleaning shafts prevent the machine from clogging by the mix of materials.



WASTE WOOD
Processing waste wood of categories A1 to A4 for material/thermal recycling.



TRISTAR

Heavy Duty Shredder with Tri-Shaft System



ARJES GmbH | Recycling Innovation

Werksplatz 1 / D-36433 Leimbach
Deutschland / Germany
Telephone +49 (0)3695 / 85 855-0
Telefax +49 (0)3695 / 85 855-14
E-Mail: info@arjes.de



TRISTAR

MAXIMUM PERFORMANCE AND HIGH EFFICIENCY

Due to the multi-stage cutting process even the hardest material can be crushed with high precision and removes the need for a secondary shredding pass. This makes it ideal for the processed material to pass quickly and directly to downstream stations for further processing.

MODEL	PERFORMANCE (kW / hp)	LENGTH x WIDTH x HEIGHT (mm)	SHAFTS (mm)	WEIGHT (kg)
TriStar	565 kW (768 hp)	11.400 x 2.500 x 3.700	2.000	37.000

Technical changes, print errors and mistakes reserved. All data are approximate values of the standard model. Latest revision: May 2015.



NEW
TRISTAR

AIR-FLOW SYSTEM

Optimized air circulation system for maximum performance.



ENGINE AND CONTROL

Powerful VOLVO PENTA diesel engine with 768 hp. Central control panel with multi-display for monitoring of the machine data.



POWERED BY
VOLVO PENTA

TILTING HOPPERS

Two tilting hoppers (front/back) for easier feeding of the material to the shafts.



DISCHARGE CONVEYOR

Long discharge conveyor with slatted belt and large discharge height.



OVERBELT MAGNET

Separating the final material from ferrous metals. With reel protection!



TRACK SYSTEM

Maintain high maneuverability even on difficult terrain.



TRAILER WITH REMOVABLE DOLLY AXLE

