



EN



ARJES

Recycling Innovation



EKOMAXX ***THE INTERMEDIATE CLASS***




www.arjes.de

OUR SHREDDERS OF THE ARJES INTERMEDIATE CLASS



When choosing the right machine, our customers are usually faced with the question of which shredder is right for their specific requirements. Therefore, we have divided our unique double-shaft shredders into three product lines to help you make the right decision.

Fields of application **EKOMAXX** class

-  Waste Wood & Biomass
-  Household & Commercial Waste
-  Construction & Demolition Waste*

Find out more about our applications and tool shafts in the brochure
RECYCLING IS OUR GLOBAL SOLUTION



PRODUCT LINE **EKOMAXX**

In the EKOMAXX class, the concept of economic sustainability is at the forefront of machine development. ARJES' goal is clearly defined: "Optimum cost-benefit ratio for the maximum benefit of our customers and users". These are mainly to be found in composting and wood processing companies as well as in the processing of domestic and commercial waste. The mobile shredder offers advantages that are a part of the standard ARJES design. These include the track system, the revolutionary shaft quick-change system, an innovative SCU control system and a paddle shaft design that guarantee the customer long service life and durability.

For all customers with special requirements regarding exhaust and noise emissions, the stationary electric version of the EKOMAXX class is the right solution. Our Electric-Power-Unit machines are particularly energy-saving and efficient for the user, as they can be used for shredding the most difficult materials with significantly less maintenance.

The main areas of application are in the processing of green waste, waste wood and roots, as well as in the processing of household, commercial and bulky waste. The shredding of old tyres, paper and cardboard is also possible without any problems with our intermediate class.



EKOMAXX 800

The highlights of the mobile intermediate class in detail

REVERSING FAN

Included! Hydraulic adjustable and self-cleaning fan for ideal air circulation in the engine compartment



SHREDDING UNIT

Large receiving hopper and double shaft system, incl. **quick-change cassette** and the optional **tilting hopper** is available



SCU-CONTROL SYSTEM

Including **remote control** and predefined shredding programs that adjust rotation and speed of shafts



TRACK SYSTEM

Included! Guaranteed high maneuverability even on rough terrain



WATER SPRINKLER

Included! Reduction of dust in the feeding area and at the discharge belt



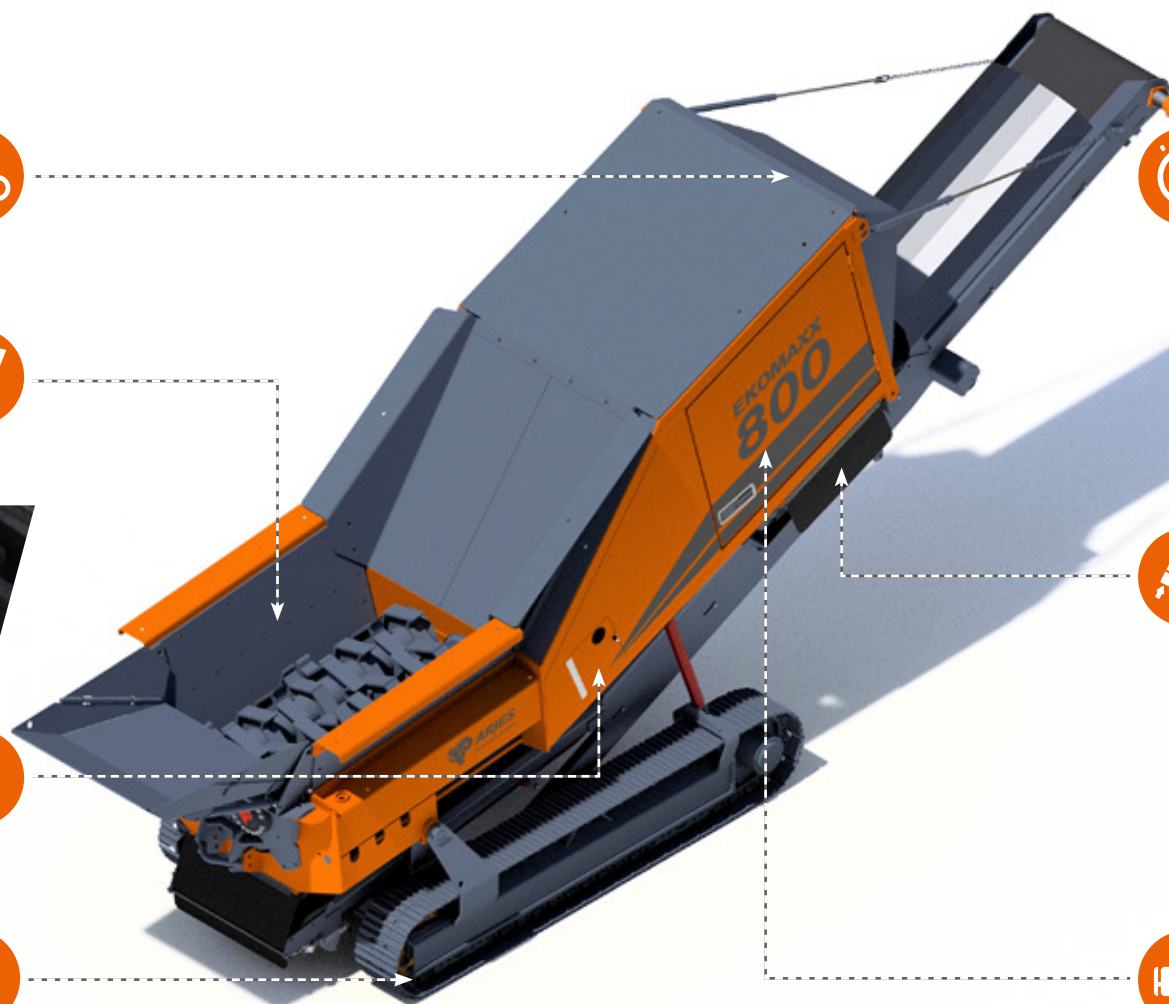
MAGNET

Included! Strong permanent magnet for effective ferrous separation



DRIVE

Powerful **VOLVO PENTA** diesel engine for low fuel consumption with highest efficiency



TECHNICAL DATA

DIMENSIONS

Version	Track system
Length (mm)	10.000 / 8.400 (Transport)
Width (mm)	2.450 / 2.450 (Transport)
Height (mm)	4.200 / 2.800 (Transport)
Total weight (kg)	21.000

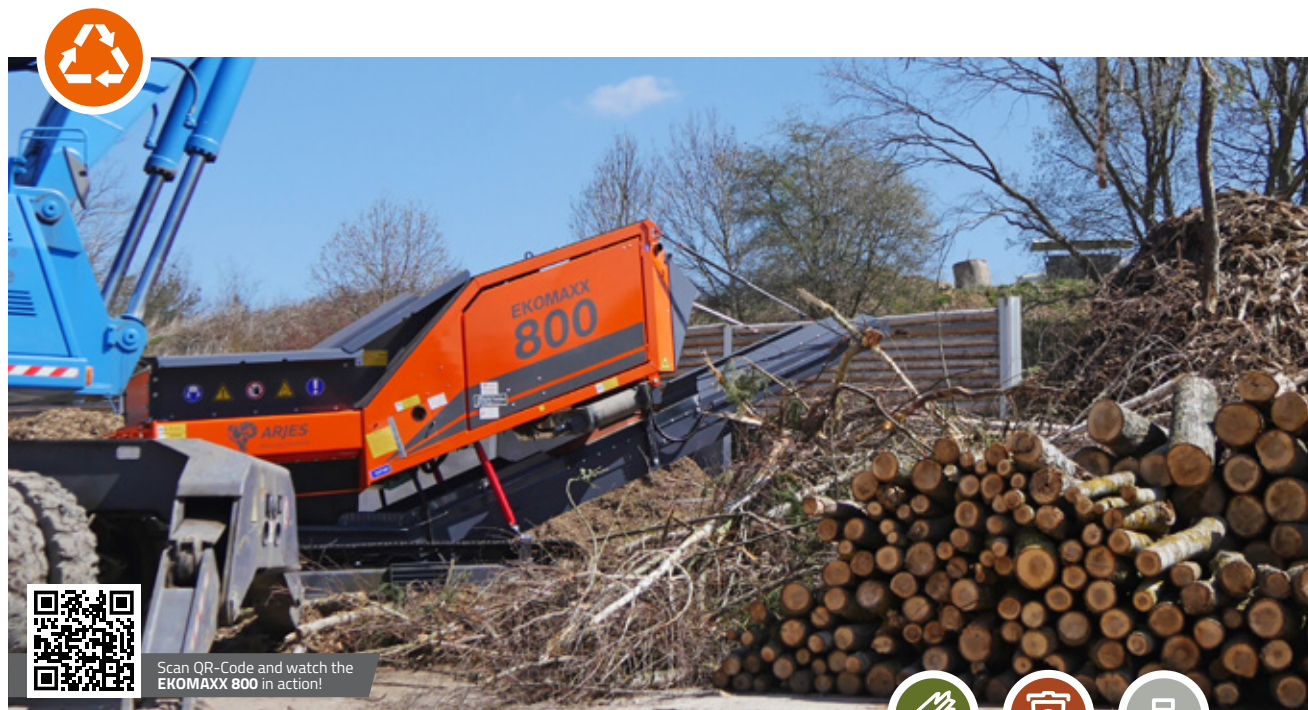
DRIVE	EU	US	ROW*
Engine (Volvo Penta)	TAD 883 VE	TAD 873 VE	TAD 853 VE
Emission standard	EU Stage V	EPA Tier4f	Stage 3A
Power (kW / HP)	235 / 320	235 / 320	235 / 320
Fuel capacity (l)	400		
Gearbox	Bonfiglioli		

DISCHARGE BELT

Discharge height (mm)	3.600
Width (mm)	1.000
Included	Over-belt magnet and water sprinkler system

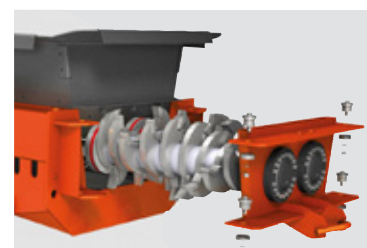
SHREDDING UNIT

Hopper volume (m³)	3,00 / 4,5 (incl. tilting hopper)
Shaft length (mm)	2.000
Shaft diameter (mm)	680
Weight (kg / cassette)	2.400
Rotation speed (rpm)	11 – 35



Manually insertable Waveform plates

By pushing in or pulling out the gap, the final width and final grain size can be adjusted. In case of wear, the plates are turned several times and reinstalled.



Quick change system for tool shafts

Simplified process that requires little time for installation and removal of shafts, facilitating maintenance, renewal and replacement of shredding shafts and providing uninterrupted operation.



Hydraulically adjustable tilting hopper

Loads with a wheel loader; shovel width of up to 3.60 m (10 ft): The shredding unit can be equipped with a 180° adjustable tilting hopper.

*Rest of the world (country-specific requirements)

EKOMAXX 800 e-pu

The highlights of the stationary intermediate class in detail

SHREDDING UNIT

Large-volume hopper and double shaft system with **quick-change cassette**



MAGNET

Optional!
Height-adjustable permanent magnet for effective Fe-separation



STATIONARY

Used as an individual machine or optional integration in recycling plants according to customer requirements



DISCHARGE BELT

Optional!
Conveyor belt for efficient material discharge according to customer requirements



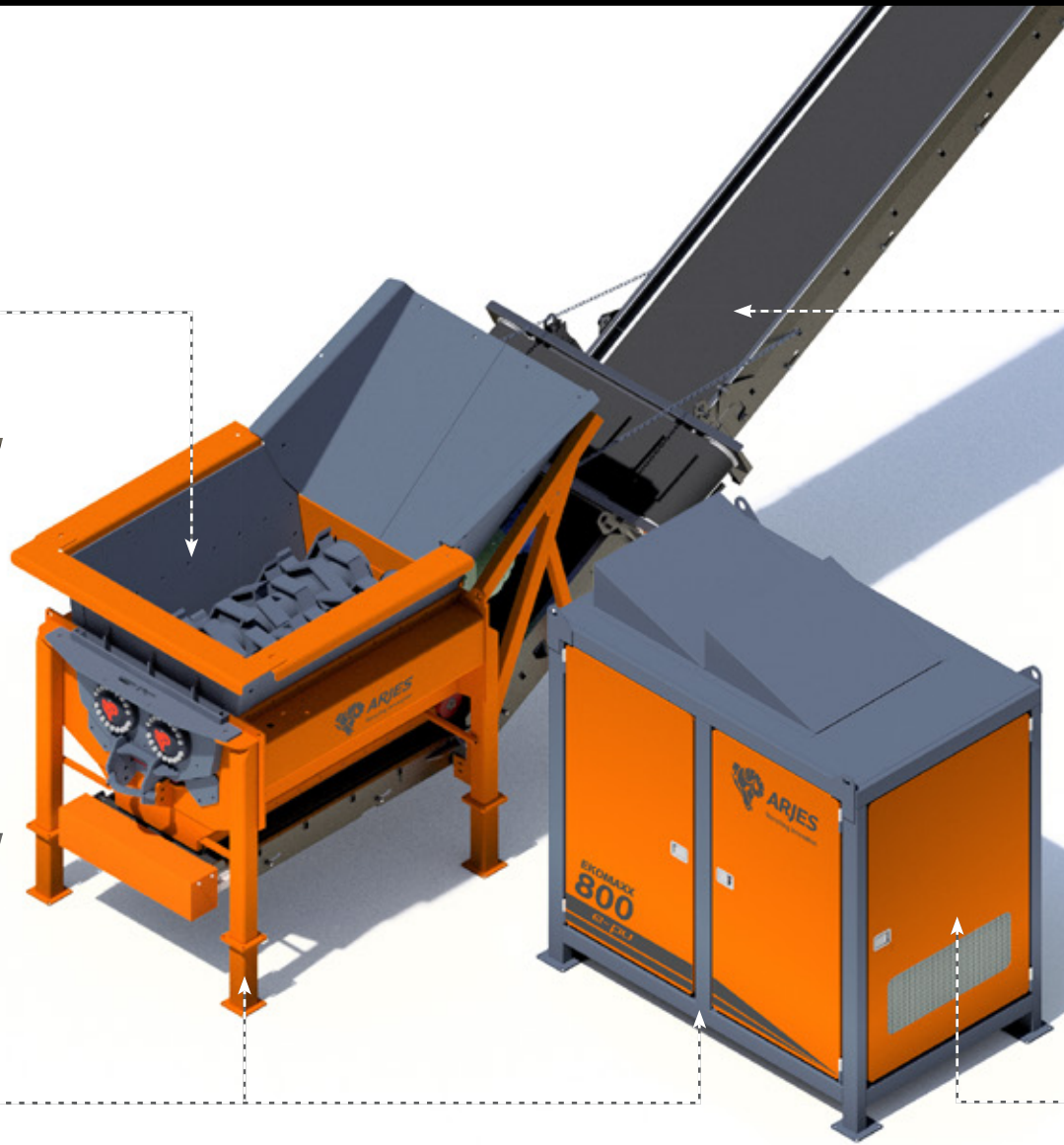
CONTROL SYSTEM

Operation via **remote control** and optional integration into complete systems possible according to customer requirements



DRIVE

Powerful **electric engine** performs with high efficiency and low energy costs



TECHNICAL DATA

DIMENSIONS

Version	Stationary
Shredding Unit	
Length (mm)	3.500
Width (mm)	2.200
Height (mm)	3.200
Control Unit	
Length (mm)	2.600
Width (mm)	1.600
Height (mm)	2.700
Total weight (kg)	approx 17.000

DRIVE

Engine	Electric
Power (kW)	250
Gearbox	Bonfiglioli

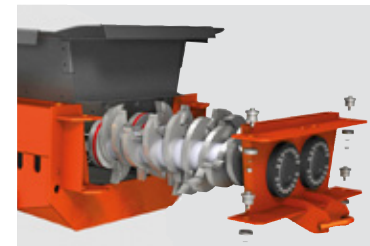
SHREDDING UNIT

Hopper volume (m³)	3,00
Shaft length (mm)	2.000
Shaft diameter (mm)	680
Weight (kg / cassette)	2.400
Rotation speed (rpm)	30 – 45



Separate drive and control unit

Due to separate placement of the shredding and control unit (max 8 meters in between) there is significant less vibration to the control system. Additionally, dust and dirt are reduced.



Quick change system for tool shafts

Easy installation and quick removal of shafts, for easier maintenance, refurbishment and changing of shaft type, which increases productivity.



Manually insertable Waveform plates

By pushing in or pulling out the gap, the final width and final grain size can be adjusted. In case of wear, the plates are turned several times and reinstalled.



ARJES GmbH

Werksplatz 1 | D-36433 Leimbach

☎ +49 (3695) 85 855-0

☎ +49 (3695) 85 855-14

✉ info@arjes.de

🌐 www.arjes.de

Your local dealer



5 CONVINCING ARGUMENTS FOR OUR INTERMEDIATE CLASS

- 1 Best price-performance ratio in its class**
incl. standard attachments* (e.g. water sprinkler system, magnet etc.)
- 2 Largest range of applications**
Processing of many types of material with the toughest requirements (such as green waste, waste wood, household and commercial waste, tyres, etc.)
- 3 Revolutionary shaft quick-change system**
Shortens maintenance times, refurbishment and changing different shaft types for uninterrupted operation
- 4 Hydraulically adjustable tilting hopper****
Higher loading capacity and operability when loading the shredder
- 5 Innovative SCU plug-and-play control**
Predefined shredding programs that control rotation and speed of shafts for user-friendly operability

*only available for mobile machines / **optional available